

THIRD SECTOR PROFILE FOR LOCHALSH

To help increase the awareness of the third sector in Lochalsh, Skye and Lochalsh CVO have developed a third sector profile for the area.

The profile has been created using extracts from OSCR, Companies House and SLCVO's members list taken at the end of July 2020.

If you would like more information about the profile or third sector groups in Lochalsh contact the SLCVO team at info@slcvo.org.uk



Lochalsh Area

Lochalsh is situated in north west of Scotland and is part of the Highland Council Ward 5 area. There are seven Community Councils supporting a population of 2,681 (NHS Highlands Report 2017).

Community Councils

- Dornie and District
- Glenelg & Arnisdale
- Kyle
- Lochalsh
- Lochduich
- Plockton
- Stomeferry

See <https://www.highland.gov.uk> for more information

Kyle of Lochalsh and Plockton are the main settlements in the area having the highest concentration of population, housing and facilities. There are five primary schools and one high school including:

- Auchtertyre Primary School
- Kyle Primary School
- Plockton Primary School
- Glenelg Primary School
- Lochduich Primary School
- Plockton High School

With premises in Auchtertyre, the West Highland College offers a wide range of courses including SQA Highers and short courses for Business and Leisure. It is also part of WHC's Supported Learning Programme which encourages students with support needs.

Health Facilities

There are two Medical Centres within the Lochalsh area. These are in Glenelg and Kyle with the main hospital for patients requiring minor treatment being the MacKinnon Memorial Hospital located in Broadford on the Isle of Skye.

If patients require more complex treatment/scans etc. they generally attend Raigmore Hospital in Inverness or Belford Hospital in Fort William. However, there is a new Hospital currently being built in Broadford, which will be able to provide more services to the Skye & Lochalsh area.

Transport Links and Parking Facilities

Lochalsh has a limited number of long stay car parks in Kyle, Plockton and Dornie, with smaller parking facilities at train stations on the Kyle to Inverness rail line in the townships of Duirinish, Duncraig, Stomeferry, Attadale and Strathcarron.

The A87 is the main road to the Isle of Skye passing through the townships of Shiel Bridge, Dornie, Auchtertyre and Balmacara. The Mam Ratagan Pass from Shiel Bridge to Arnisdale goes through Glenelg where the Isle of Skye Ferry runs in the summer to Kylerhea on the Isle of Skye. To the east the A890 follows the Kyle rail line and connects Lochalsh to South Wester Ross and Lochcarron.

Leisure Facilities

The Lochalsh Leisure Centre in Kyle of Lochalsh is an independent health and fitness facility. It has a service level agreement with the Highland Council for High Life Highland members. Facilities include a swimming pool, fitness suite, free weights room and classes. Many of the village halls across the area also hold fitness classes along with other community activities.

Village and Community Halls

- Glenelg and Arnisdale Community Hall
- Kyle Public Hall
- Plockton Village Hall
- Dornie & District Community Village Hall
- Inverinate and Loch Duich Community Centre
- Achmore Community Hall Association
- The Ceilidh House & Heritage Centre

Main Visitor Attractions

- National Trust Balmacara Estate
- Eilean Donan Castle
- The Plockton Visitor Centre
- The Original Glenelg-Skye Ferry
- The Plock, Kyle's Community Parkland
- Kyle Railway Museum
- Brochs at Glenelg - Dun Telve & Dun Troddan

Outdoor spaces such as the National Trust Balmacara Estate and the Plock, Kyle's Community Parkland, have many walking and cycle pathways for all abilities and there are a number of historical and wildlife visitor attractions.

Third Sector Organisations in Lochalsh

There are 55 community groups registered in the Lochalsh area, these include:

- 43 Registered Charities
- 9 Social Enterprises
- 2 Development Trusts
- 1 Community Amateur Sports Club (CASC)

Of these groups

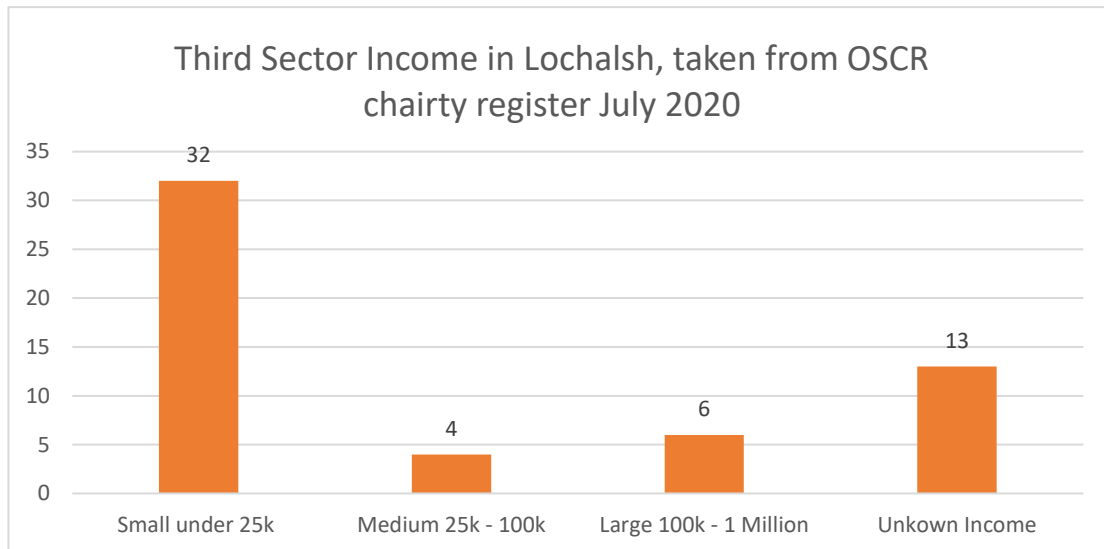
- 27 are Unincorporated Charities
- 11 Scottish Charitable Incorporated Organisations (SCIO)
- 14 Companies Limited by Guarantee
- 2 Community Interest Companies (CIC)
- 1 Trust

Around 37% of groups focus on community development, the provision of recreational facilities/activities and public participation in sport.

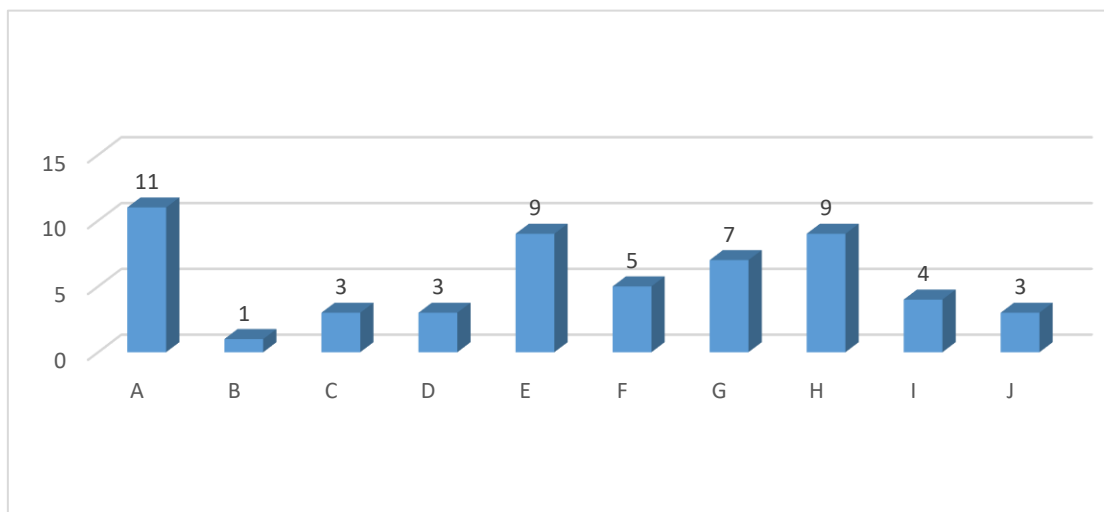
Around 60% are considered small organisations with an income of less than £25,000 per annum and mainly run by volunteers.

Third Sector Income

The information below has been taken from OSCR, therefore only includes registered charities (78% of groups). The vast majority of groups are classified as small, these tend to provide services in a specific area such as a village hall. The larger groups tend to be national organisations providing services in the local area.



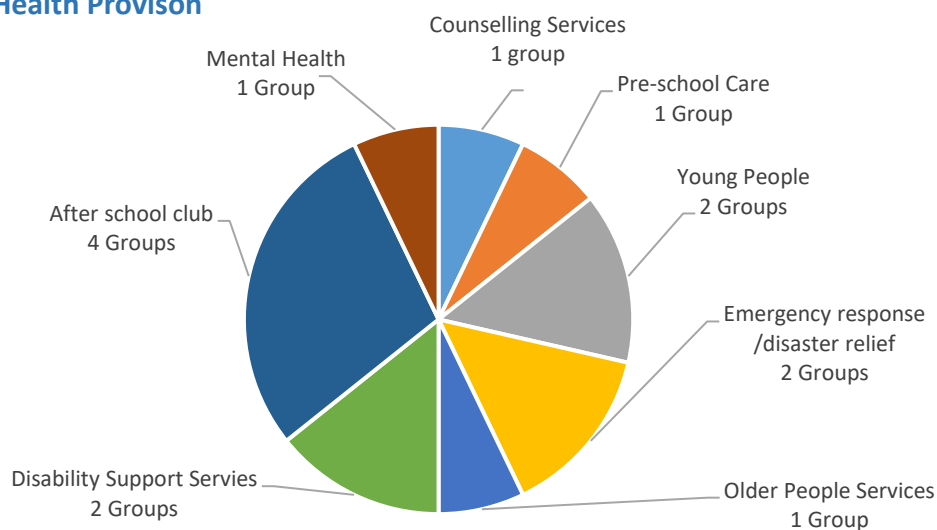
Third Sector Purposes



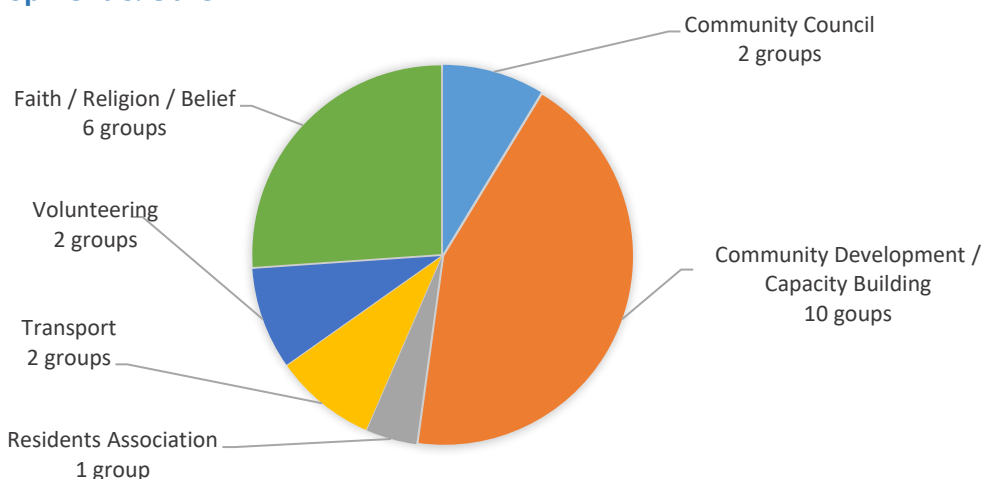
- A** = The advancement of citizenship or community development
- B** = Community Transport
- C** = The advancement of education
- D** = The advancement of environmental protection or improvement
- E** = The advancement of public participation in sport
- F** = The advancement of religion
- G** = The advancement of the arts, heritage, culture or science
- H** = The provision of recreational facilities, or the organisation of recreational activities
- I** = The relief of those in need by reason of age, ill health, disability, financial hardship or other disadvantage
- J** = The saving of lives

Services Provided

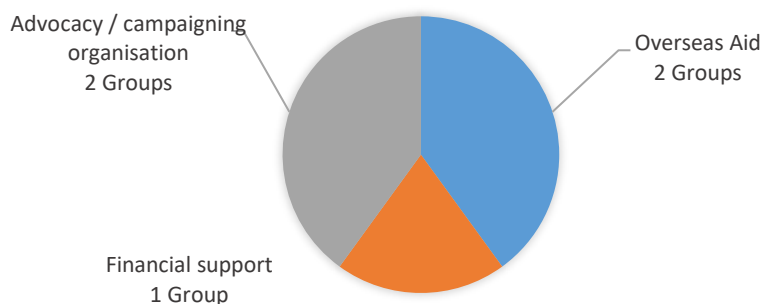
Social Services & Health Provison



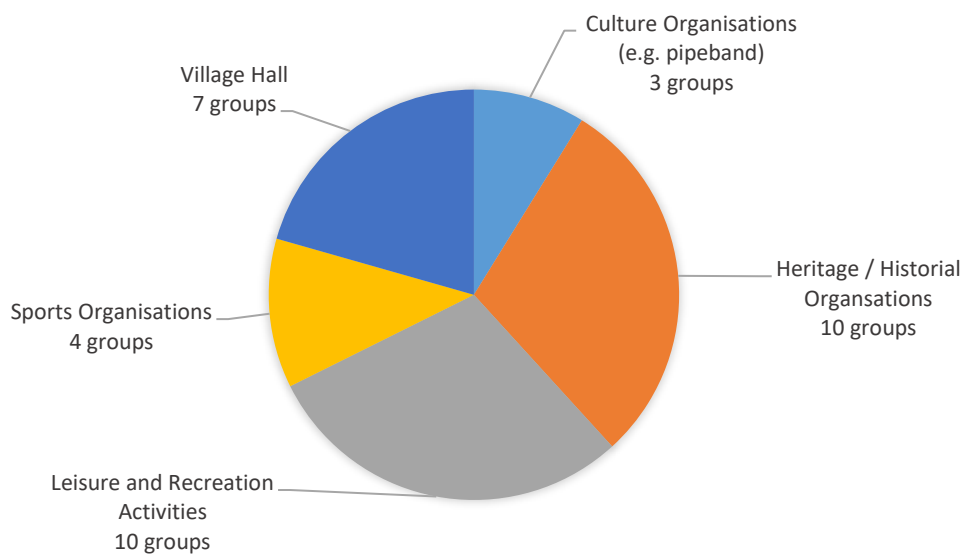
Community Development & Other



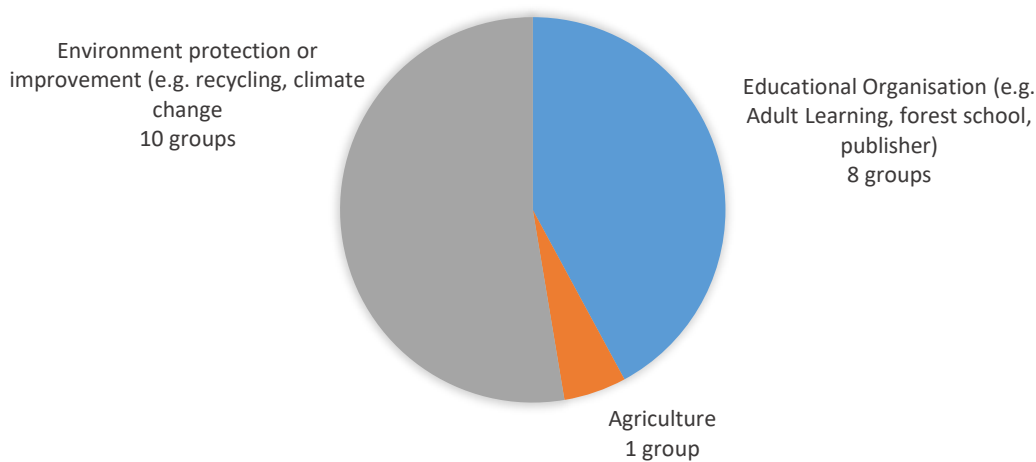
Prevention and Relief of Poverty / Law and Advocacy Services



Culture, Recreation and Sport Services



Education and Research / Environment and Animals Services



Where to find more information

- OSCR - <https://www.oscr.org.uk/>
- Companies house - <https://beta.companieshouse.gov.uk/>
- The national online directory ALISS <https://www.aliss.org/>
- SLCVO's website, Health and Well-being Community Directory PDF <https://www.slcvo.org.uk/>
- The Think Health Think Nature website <https://www.thinkhealththinknature.scot/>

Skye and Lochalsh Council for Voluntary Organisations are a rural delivery partner for the Highland Third Sector Interface. We provide free third sector support services across Lochalsh, Skye and Wester Ross, including:

- Supporting the set-up and running of voluntary groups and community-led organisations
- Developing community capacity and training
- Helping people find volunteering opportunities
- Developing volunteering best practice
- Connecting third sector groups to respond to local priorities
- Ensuring there is a strong third sector voice within local planning structures

If you would like to chat to us about how we can support your group call 01478 612921 or email info@slcvo.org.uk.

Contact

Skye and Lochalsh Council for Voluntary Organisations
Tigh Lisigarry, Bridge Road, Portree , Isle of Skye IV51 9ER
www.slcvo.org.uk
info@slcvo.org.uk
01478 612921

A charity registered in Scotland number SC013885
Company limited by Guarantee SC177372

Document produced September 2020

Skye and Lochalsh Council for Voluntary Organisations are core funded by the Highland Third Sector Interface



Highland Third Sector Interface
Thorfin House, Bridgend Business Park, Dingwall, IV15 9SL
<https://www.highlandtsi.org.uk/>
info@highlandtsi.org.uk
01349 864289